

# COVID-19 Protocols

The safety of our Scouts and volunteers is the Copperhead District's top priority. While there is still much uncertainty regarding COVID 19, we are monitoring the information provided by health experts and government agencies to help keep safe those who choose to come to camporee.

Our decision to operate camporee is based solely on the ability to follow BSA, SHAC, local, state, other government recommendations and guidelines.

Our camporee health and safety plan includes:

- SHAC Pre-Camporee Medical Checklist. To be completed by parents prior to camporee and turned into camp medic at check-in. Checklist is at the end of this document.
- Health screening conducted by your unit prior to travel to camporee, including a temperature check and once at camporee daily health screenings of Scouts and leaders by unit leadership. Use Camper Health Screening Form at the end of this document.
- Program changes to limit the intermingling of units while in camp
- Patrol sizes are managed to encourage and accommodate physical distancing requirements
- Elimination and redesign of certain programs where physical distancing is not practical
- Enhanced sanitation with hand sanitizer provided at all program areas.
- Updated and enhanced cleaning protocols for all camp areas and shared program equipment
- Face coverings or gators are required when not at your unit campsite.
- An emergency response plan that includes an isolation and quarantine protocol should a person at camp develop symptoms of COVID-19.
- Wilderness First Aid certificate holder on staff and on property during the entirety of camp.

These precautions are important, but these efforts cannot eliminate the potential for exposure to COVID-19 or any other illness while at camp. Experts have said that people with COVID-19 may show no signs or symptoms of illness, but can still spread the virus, and people may be contagious before their symptoms occur. The fact is that someone with COVID-19 may pass the required health screenings and be allowed into camporee.

We also know the very nature of camp makes physical distancing difficult in many situations and impossible in others.

Information from the Centers for Disease Control and Prevention (CDC) states that older adults and people of any age who have serious underlying medical conditions are at higher risk for severe illness from COVID-19. If you are in this group, please ensure you have approval from your health care provider prior to attending camp.

Every staff member, volunteer, and Scouting family has to evaluate their unique circumstances and make an informed decision before attending camp. We hope this information will be helpful as you make that choice.

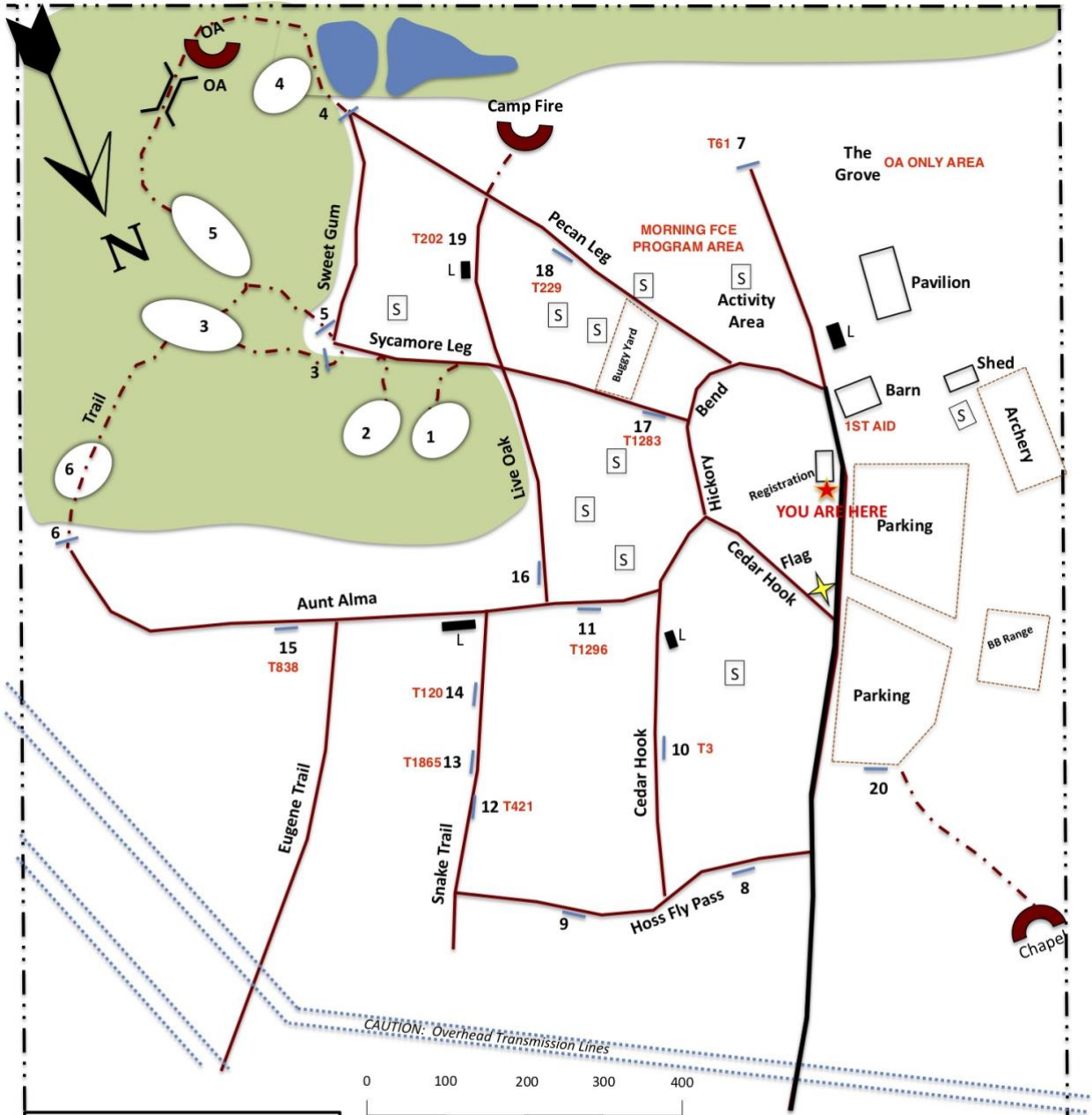
## PRE-CAMPOREE

- Every scout and scouter will need to complete the Pre-camporee medical form (pg. 20). This form will be turned in with your BSA MED Forms at check-in to camp medic.
- Immediately before departure to camporee the Camporee Health Log (pg. 21) will need to be filled out and turned in at check-in to the camp medic.

## DURING CAMPOREE

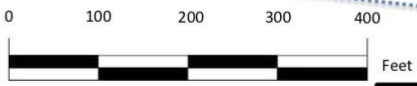
- Each morning prior to program activities a unit representative must complete the Camporee Health Log and be prepared to show it to our medic if requested.
- If a scout has a temperature please keep that scout at your campsite and immediately inform the camp medic. The camp medic will come and determine what further steps need to be taken.
- All Scouts and Scouters will be required to wear face masks during all events where they will come into contact with Scouts or Scouters from other units.
- All units are required to provide their own hand sanitizer/hand washing stations at their respective campsites. The district will provide hand sanitizer at all program stations both morning and afternoon.

# Camp Brosig Map



**LEGEND**

- : Primitive Campsite
- : Campsite Gate
- : Shelter
- : Latrine
- : Water Spigot
- : Fire Ring
- : Paved Road
- : Dirt Road
- : Trail
- : Fence Line
- : Dense Foliage / Trees



**Site Names ... Cap.**

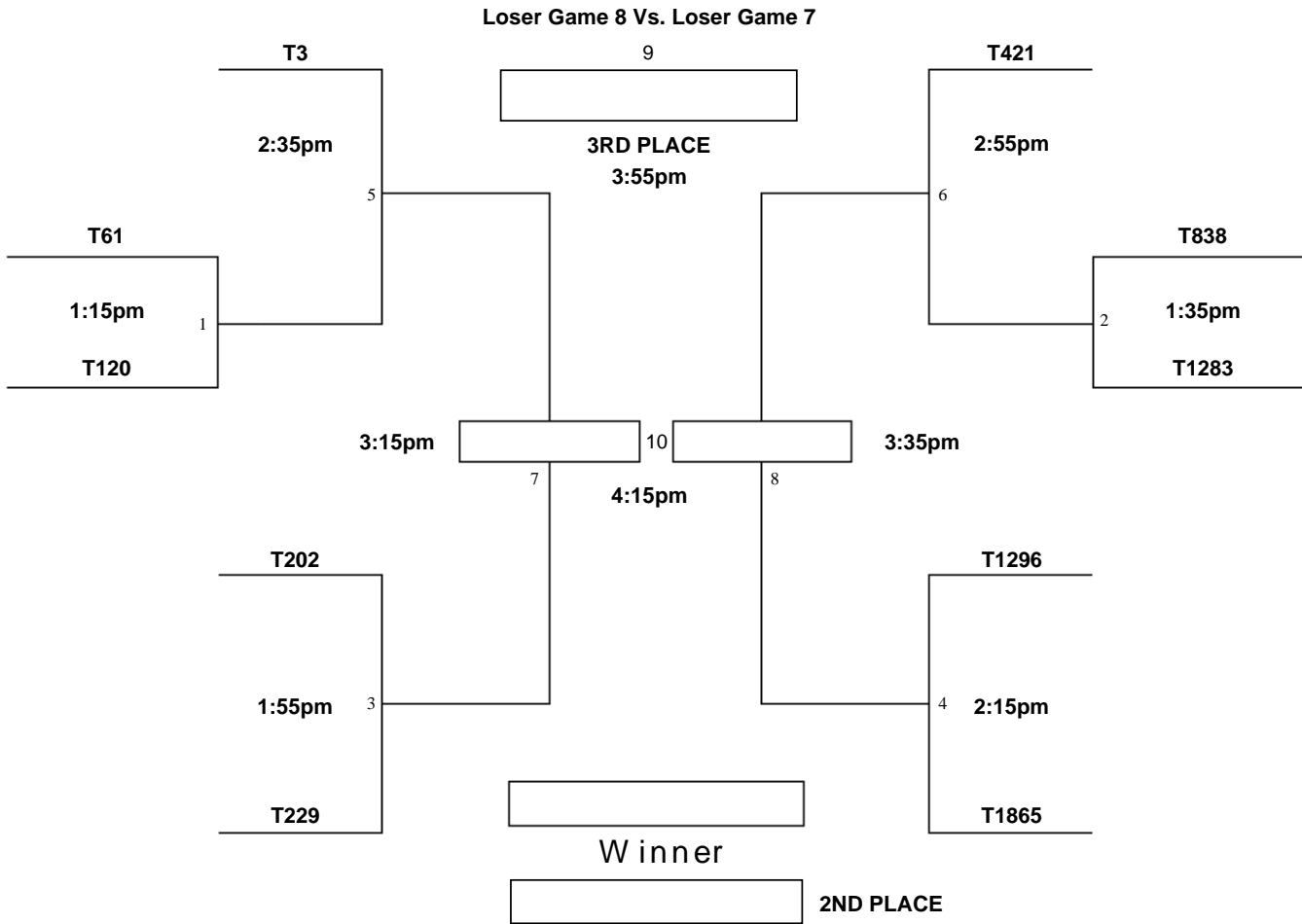
1. Coshatte ... 35	12. Osage ... 35
2. Tonkawa ... 20	13. Chickasaw ... 35
3. Thieleman ... 15	14. Pawnee ... 40
4. Caddo ... 10	15. Navaho ... 35
5. Apache ... 50	16. Cheyenne ... 40
6. Blackfoot ... 15	17. Tejas ... 100
7. Comanche ... 45	18. Nez Perces ... 30
8. Mohawk ... 10	19. Cherokee ... 35
9. Sioux ... 25	20. Gros Ventre ... 40
10. Kiowa ... 40	
11. Choctaw ... 25	



**CAMP BROSIG**  
**SAM HOUSTON AREA COUNCIL**  
**Boy Scouts of America**  
 1893 Trenckmann Road, Sealy, TX 77474

# TUG-O-WAR TOURNAMENT BRACKET

## 10 Team Single Elimination



**PrintYourBrackets.com**



